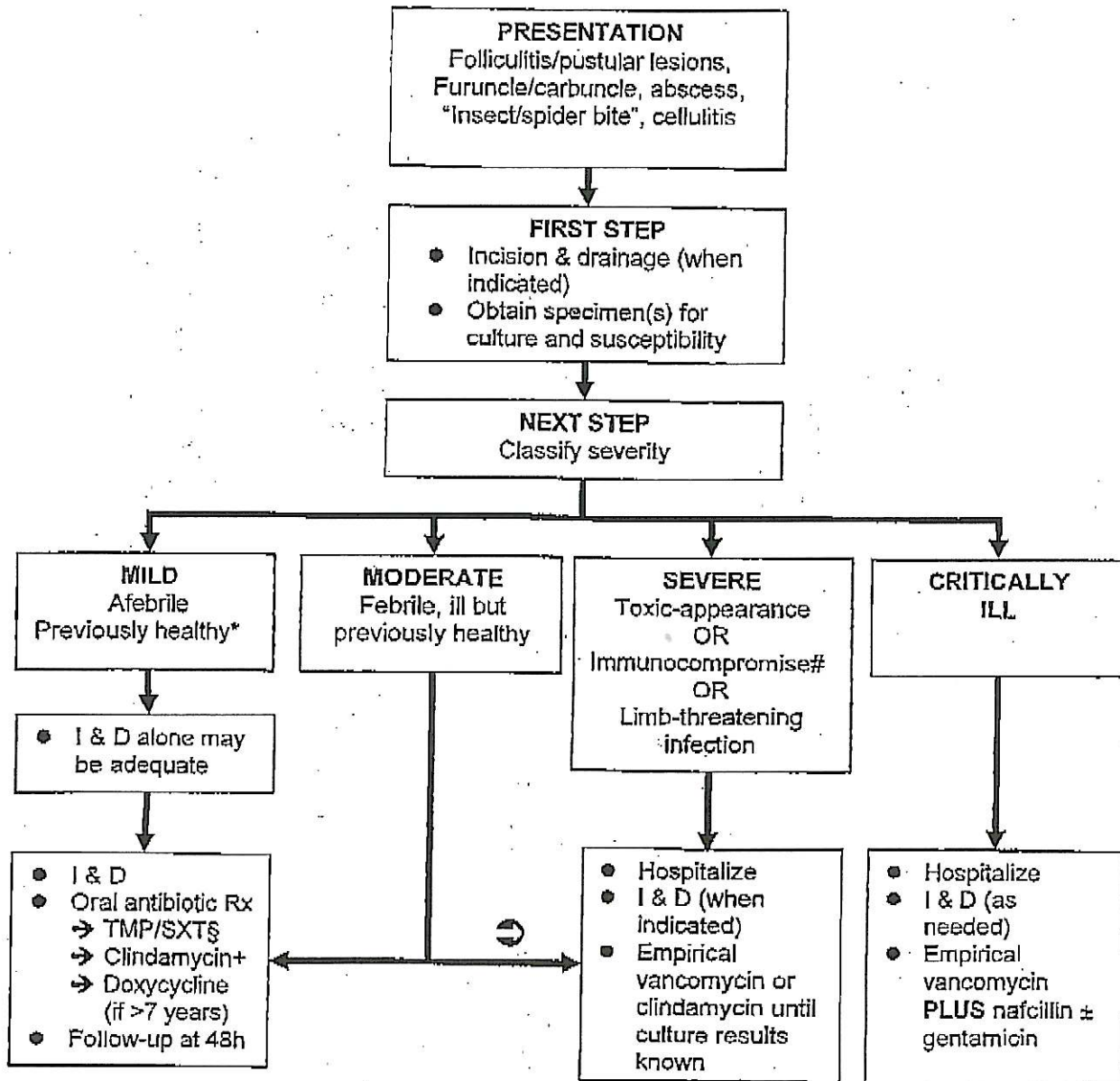


INITIAL MANAGEMENT OF SUSPECTED *S. AUREUS* SKIN AND SOFT TISSUE INFECTIONS



↻ If extensive area of involvement, clinically concerning systemic symptoms, or compliance and follow-up care uncertain

* Previously healthy: no hospital contact or antibiotics in the prior 12 months
 # Immunocompromise: any chronic illness except asthma or eczema
 § TMP/SXT = trimethoprim/sulfamethoxazole if group A *Streptococcus* unlikely
 + Consider prevalence of clindamycin susceptible and "D" test negative CA-MRSA strains in the community